

How to use VPN on window

VPN or (Virtual Private Network. It is an outdoor network connection technology. (Wan – Wide Area Network) Is a network system within the organization which connects each network branch by relying on the internet as an intermediary. Tunneling or create the tunnel to collect and receive the data. There is an encryption system to prevent unauthorized use of information and suitable for a large organization that is the flexibility to receive and collect between branches. There is an encryption system to prevent unauthorized use of information and suitable for a large organization that is the flexibility to receive and collect between branches. It has the same performance as Private Network. As for staff and students in Rangsit University, you can check an online database at the library which not connected to a VPN by using the same username and password that login into the intranet. Users can use VPN through the Windows computer by using these steps.

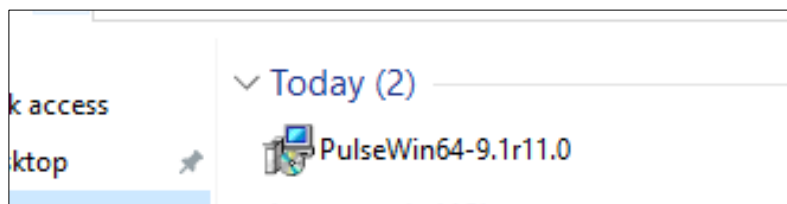
1. Download the program name “PulseWin” by clicking download button.

RSU VPN @ Home

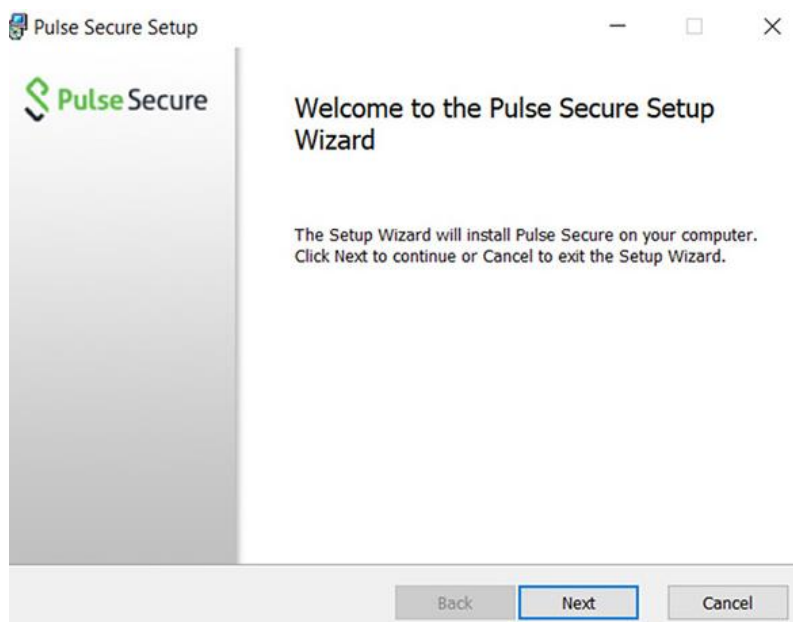
Online database searching from outside the university network Convenient and Easy to use Only available to current personnel and students.

Download program/ Instruction manual			
Windows 32 bit	Windows 64 bit	Mac OS	IOS/Android
<>Download program PulseWin32 bit	<>Download program PulseWin64 bit	<>Download program Pulse-mac : MAC <>Download program PulseMac : MAC version hight 10.15	-
<>Instruction manual	<>Instruction manual	<>Instruction manual	<>Instruction manual

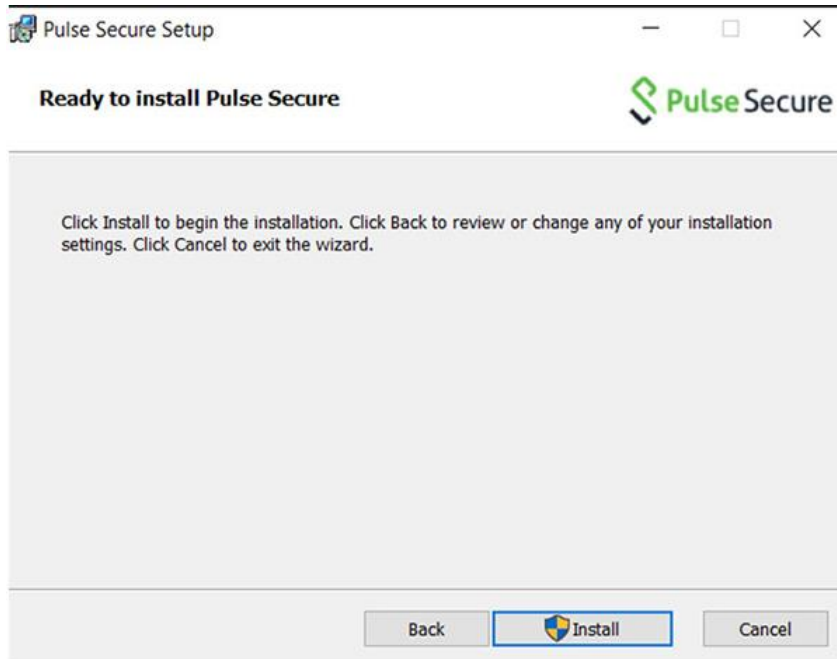
2. When program are now loaded. Double click to the file “Pulse Secure”.



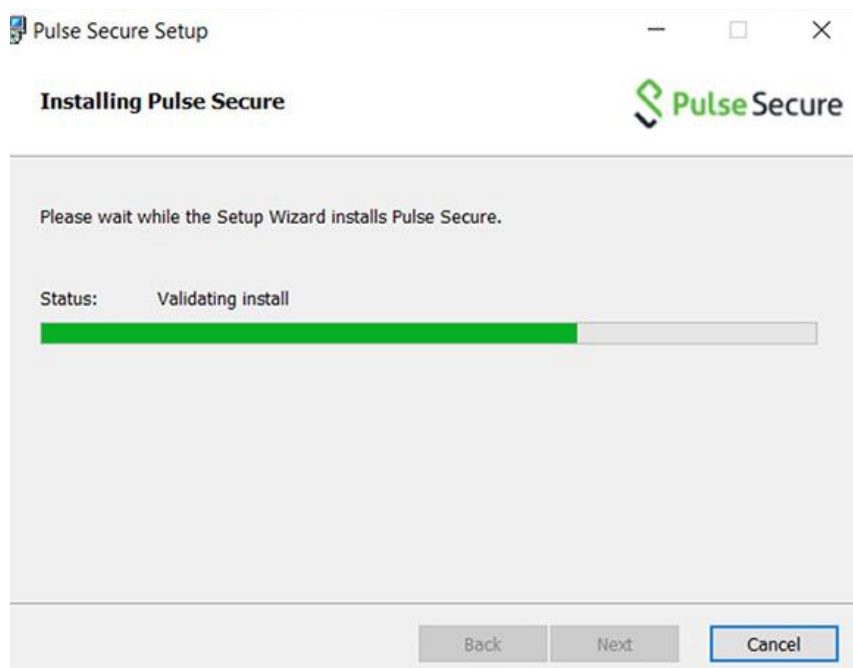
3. “Welcome to the Pulse Secure Setup Wizard” will appear on the screen and then click “Next” button.



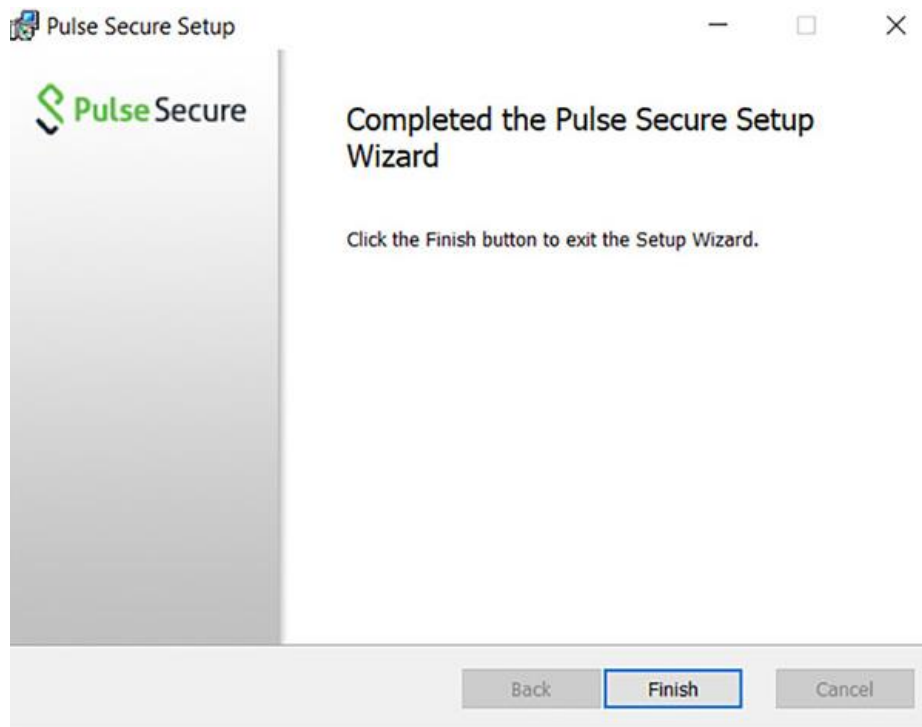
4. Then click the “Install” button to install the program.



5. Program will proceed the installation.

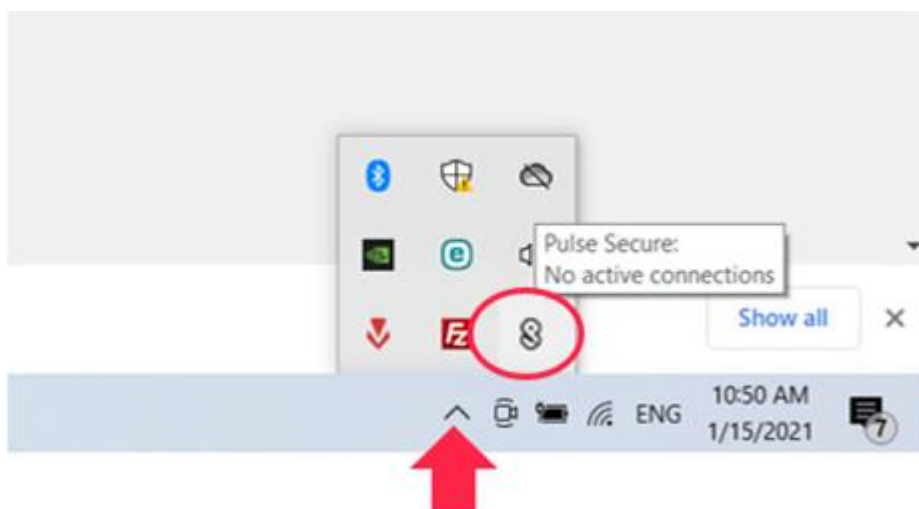


6. When the installation is finish, click “finish” button.

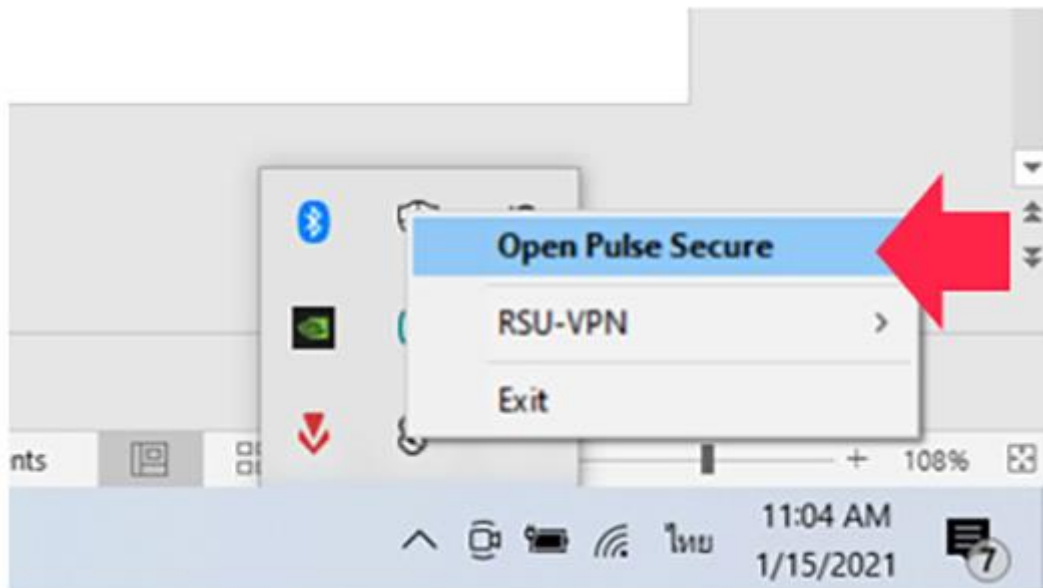


7. Click the upper shaft at the bottom right of the screen.

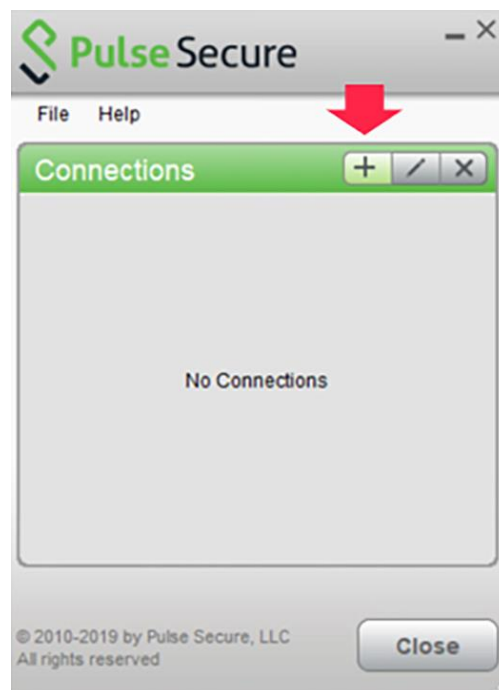
The Pulse Secure icon will appear.



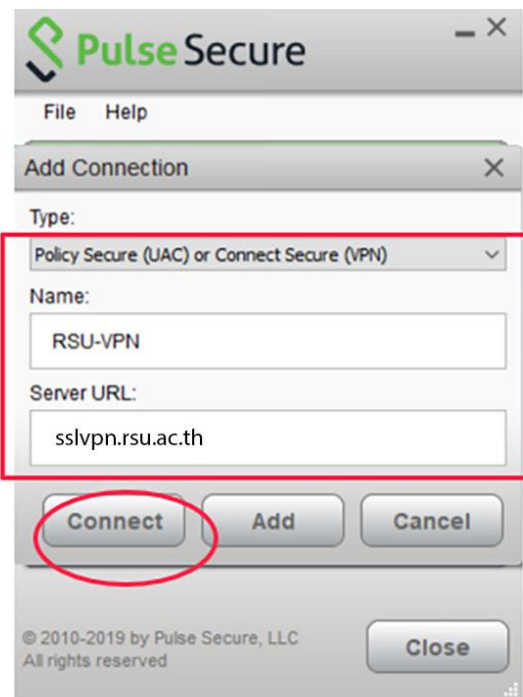
8. Click Pulse Secure icon and choose Open Pulse Secure.



9. When program appear on the screen and then click the "+" button.



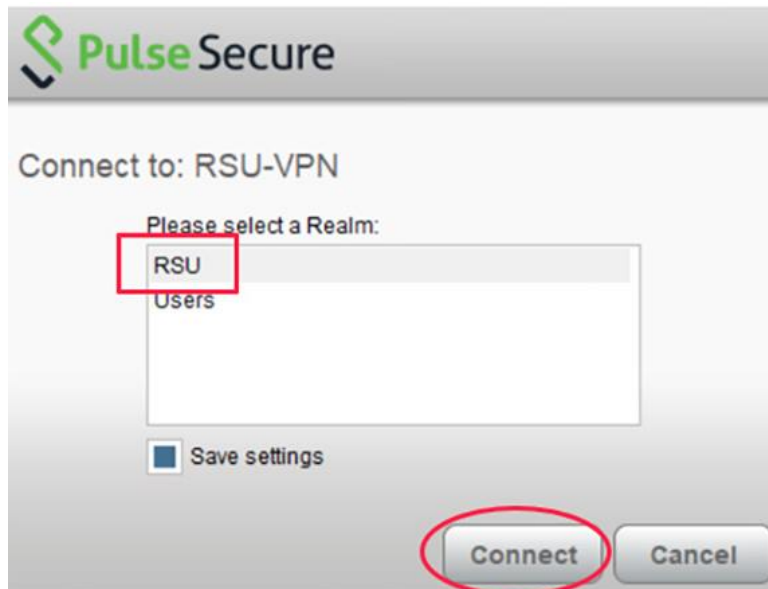
10. Put name Server VPN in the box then click “connect” button.



11. Connect to : RSU-VPN will appear on screen. Click the “connect” button. To save the setting click at “save setting” button.



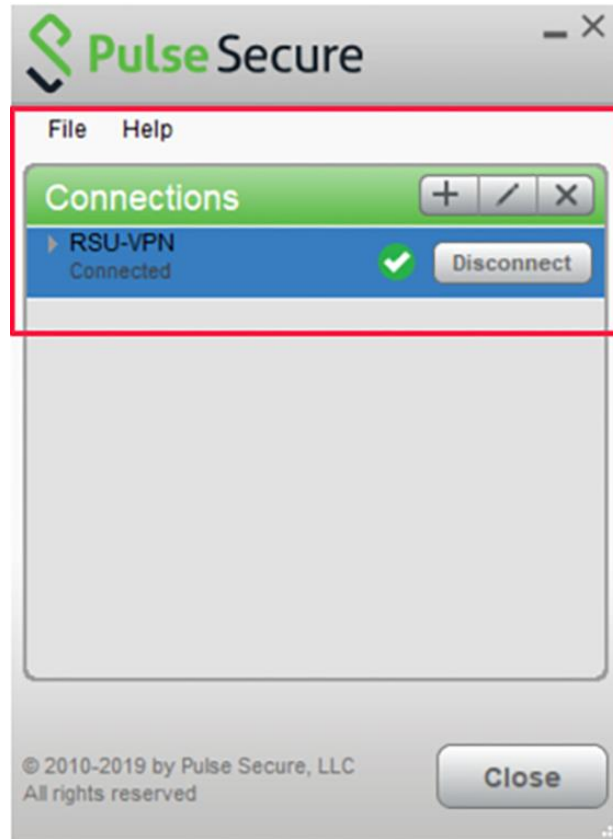
12. Connect to : RSU-VPN will appear on screen. Choose “RSU” and click “connect” button.



13. The screen will show the box of username and password by put the username and password as same as the intranet then click the “connect” button.



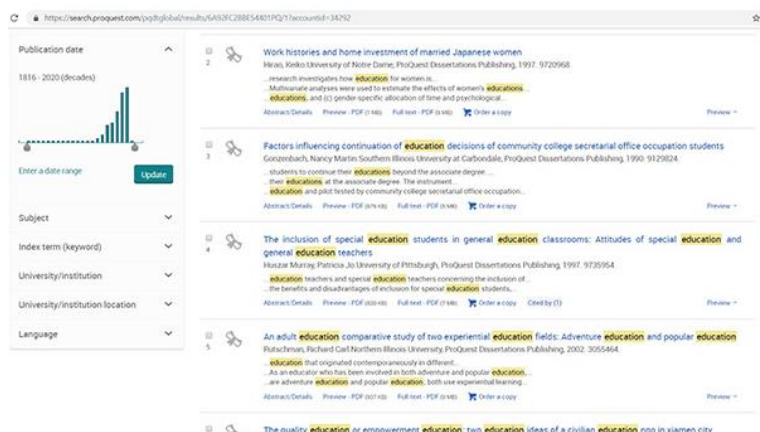
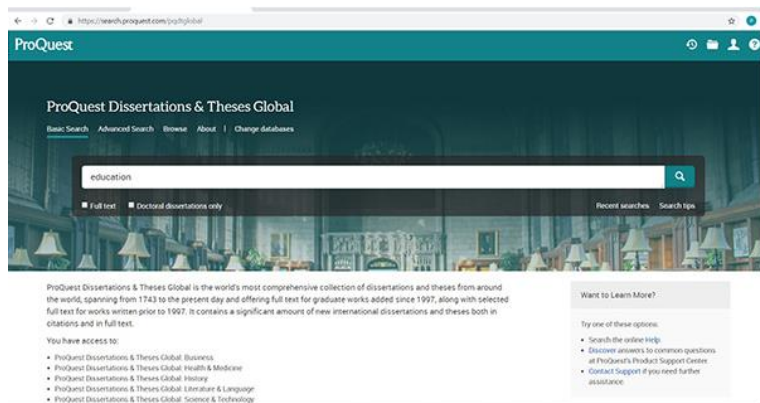
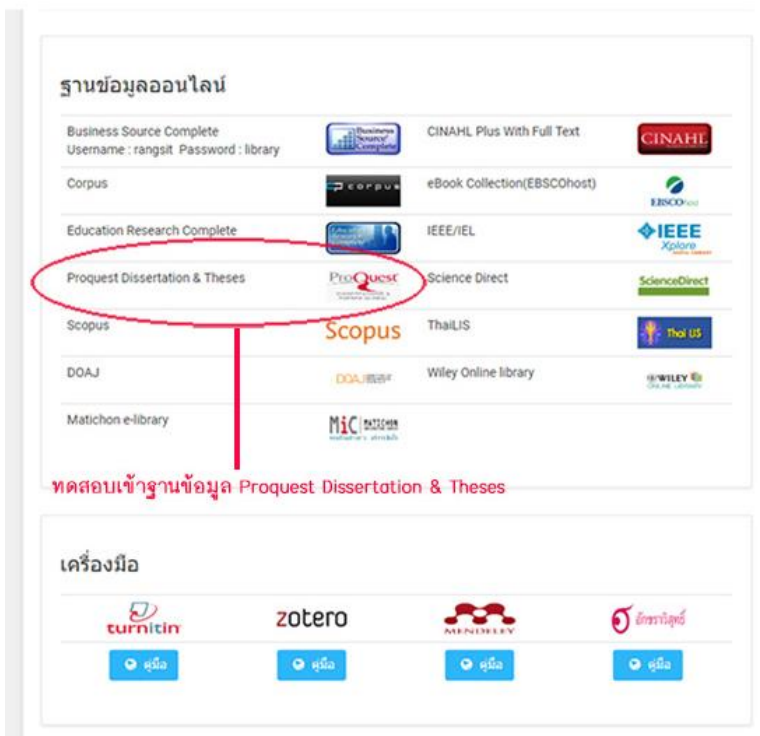
14. If VPN is connected. It will show connection screen as in the picture below.



15. Enter library website <http://library.rsu.ac.th>. You can search the desired database to get the full document as well. It same searching at University.



16. In an online database, you can search any database you want. For example: click on the “Proquest Dissertation & Theses” it will go to the page like the picture below.



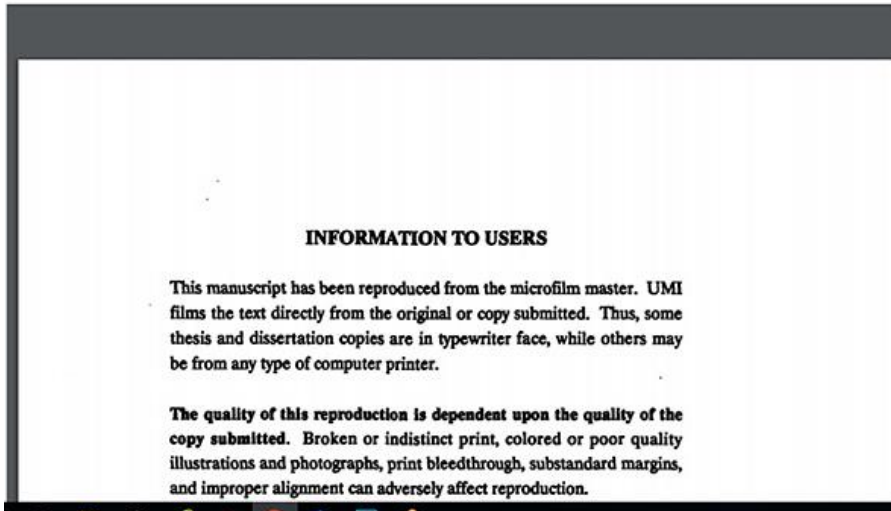
Factors influencing continuation of education decisions of community college secretarial office occupation students

Gonzenbach, Nancy Martin Southern Illinois University at Carbondale, ProQuest Dissertations Publishing, 1990. 9129824.

Full text - PDF

Preview - PDF

Abstract/Details



17. When you finish doing your research and want to logout from Web VPN please click “Disconnect” button.

